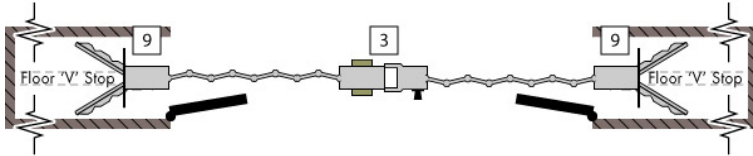


9100 Series Layouts

Bi-Part, Pockets both Sides

A straightforward layout that uses two pocket areas to hide the stack once the curtain has been opened.



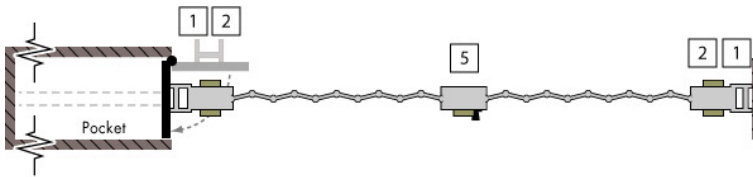
Stack Between Jambs

A simple, no-nonsense layout design ideal for when space is at premium and creating a pocket area is not possible.



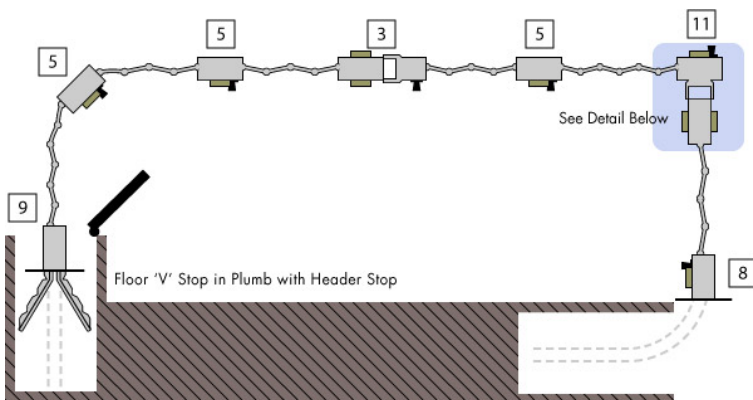
Single Stack into a Pocket

A straightforward layout that uses a simple pocket area to hide the stack once the curtain has been opened.



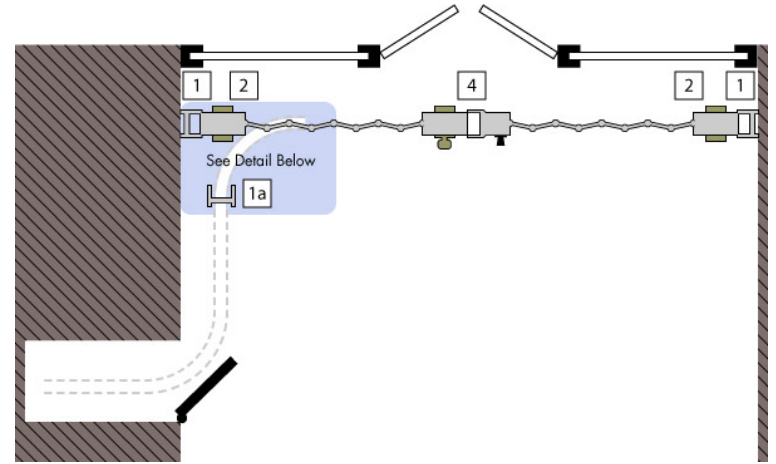
90° Curve Bi-Part Single Stack

Allows two different curtains on two separate tracks to lock together without a curve. Single stack curtains over 30' (10,000mm) should be Bi-Parted for ease of use.

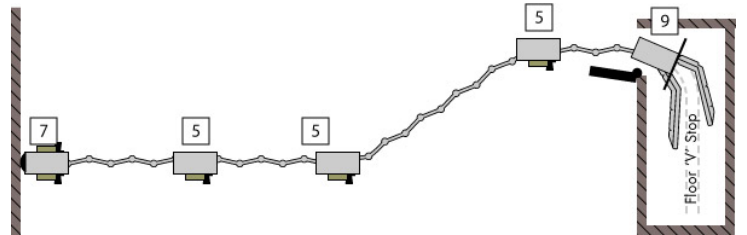


Remote Stack with Caddy

An advanced system that stores the curtain in a remote area removed from the entrance.



“S” Curve (2-135° curves) with Single Stack into 90° Pocket



Dual Track

An innovative layout for use when minimal pocket depth is available. Top and bottom lead post with attached spacing post to angled wall allows access to locking on acute-angle side.

